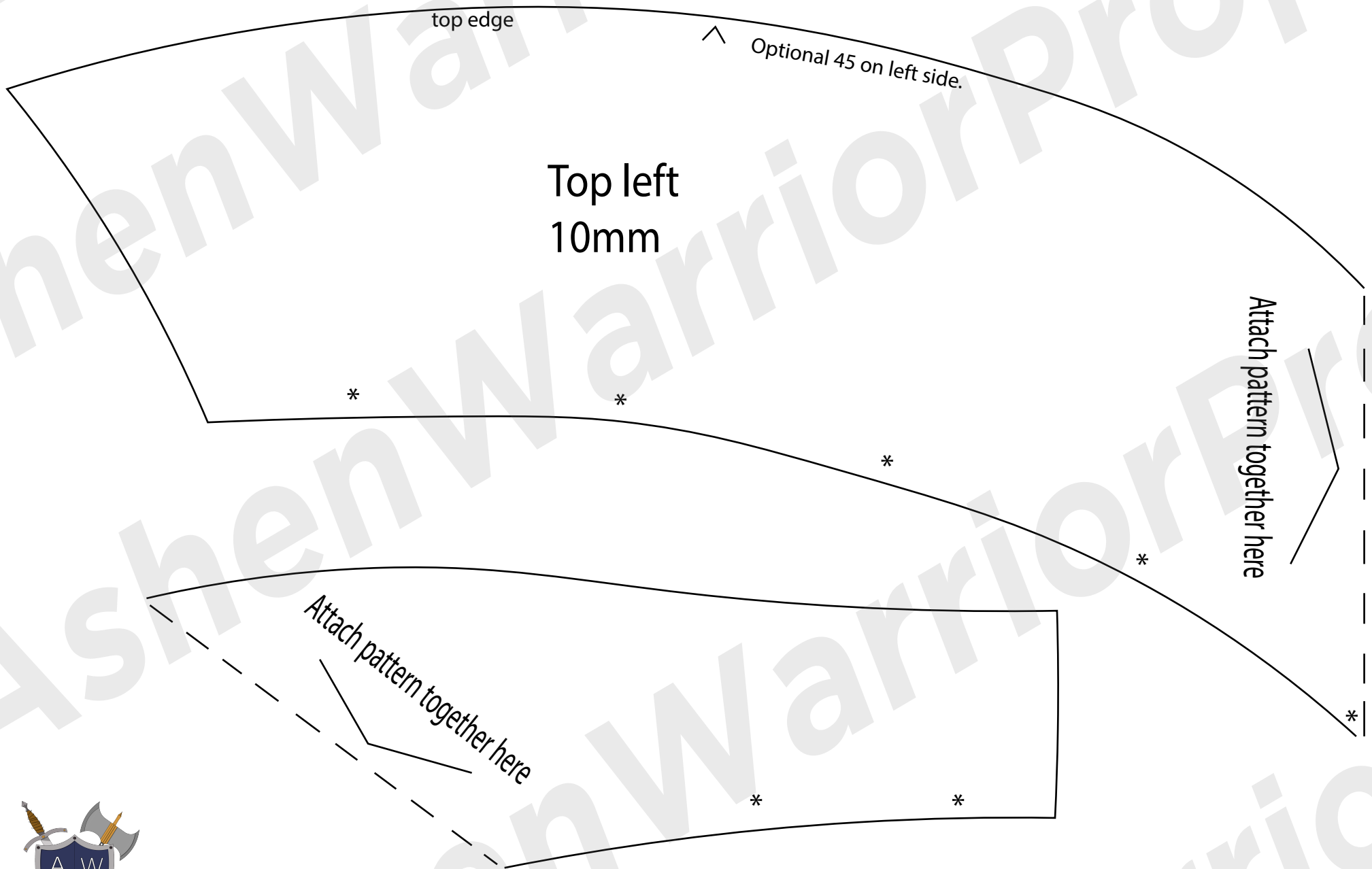


# Head Shell

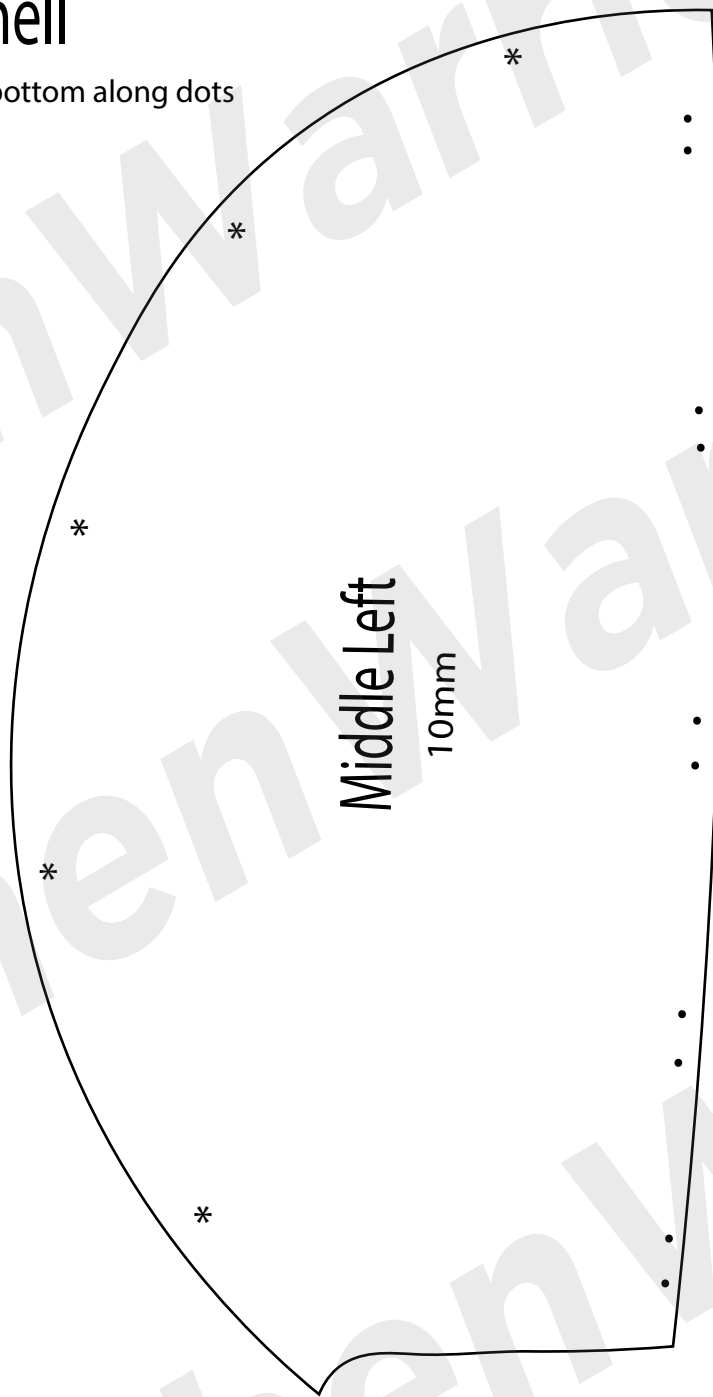
Flip and trace for right side.



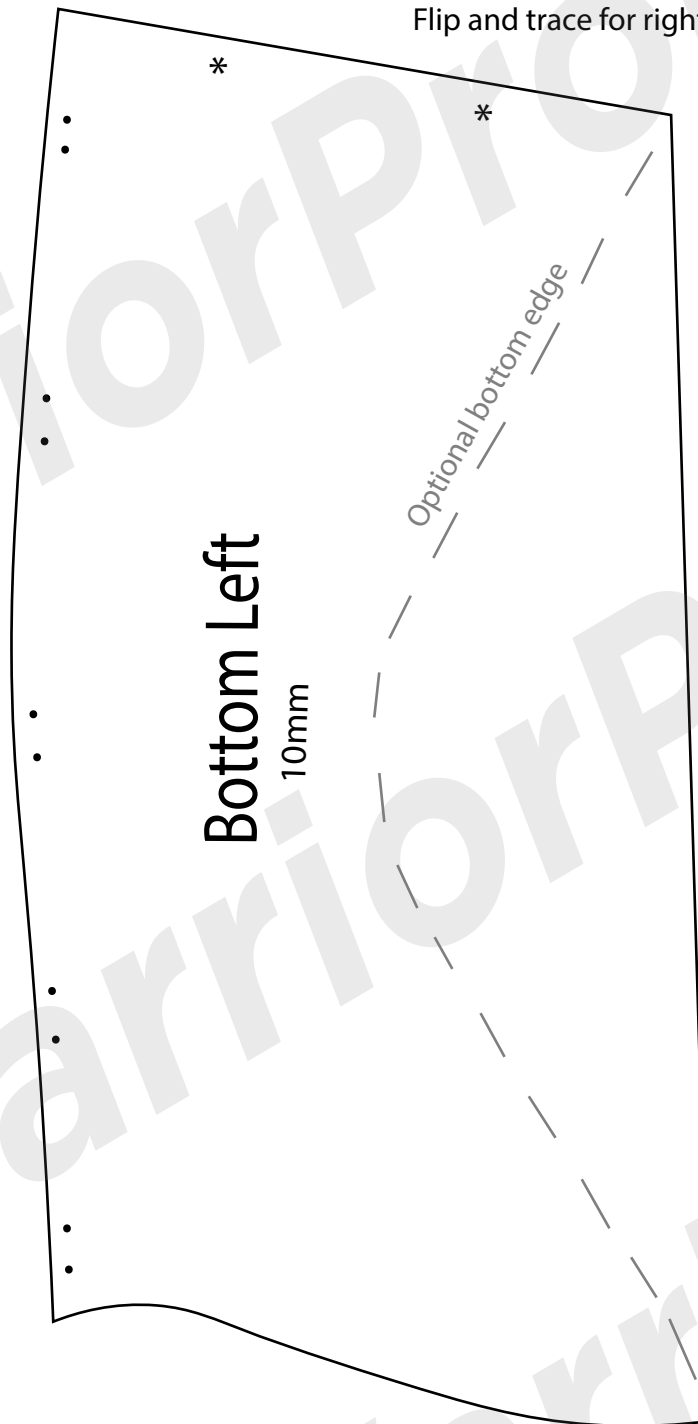
Attach left and right top peices to side sections along the edges with stars. Then attach top edges together.

# Head Shell

Attach Middle and bottom along dots

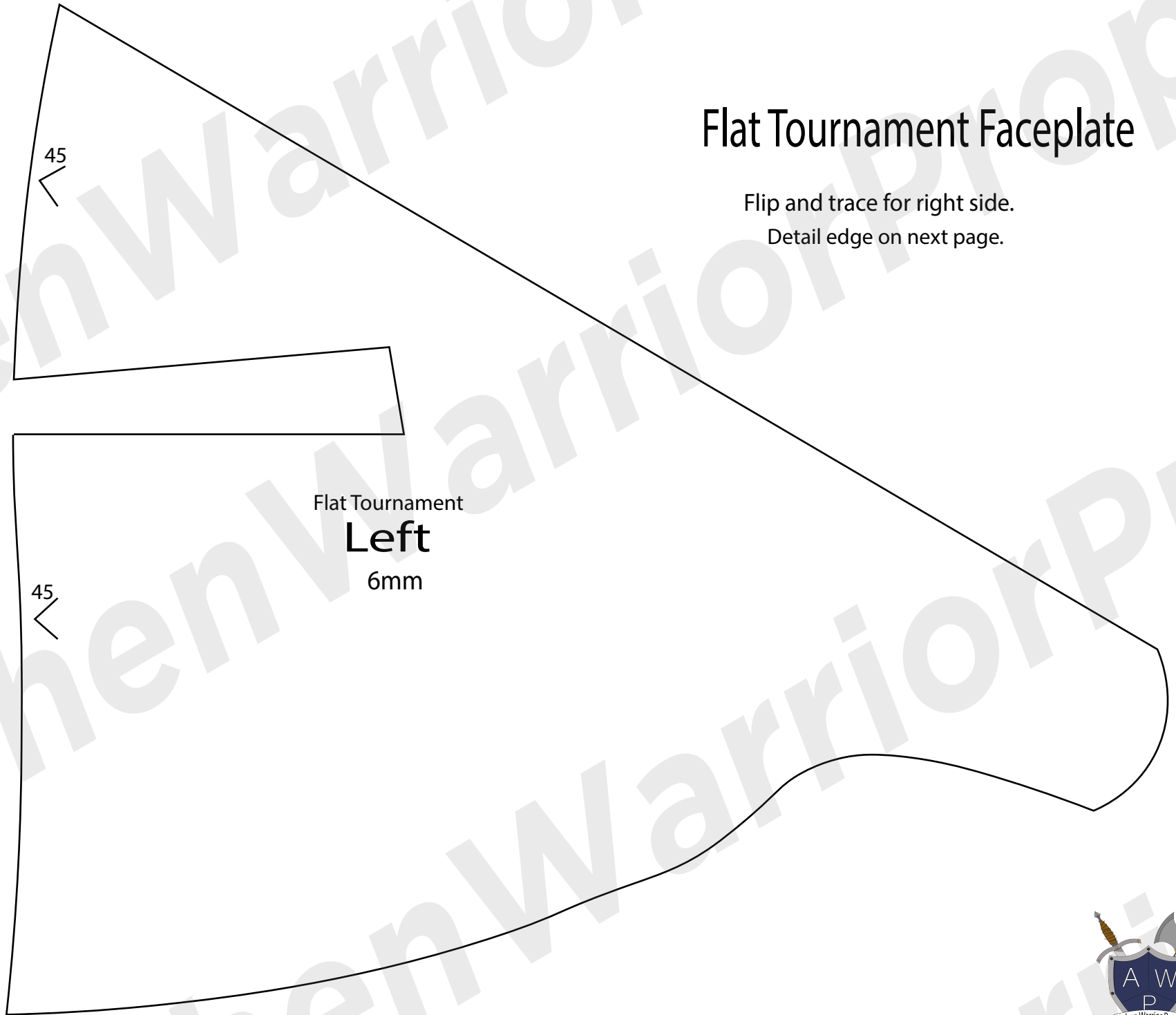


Flip and trace for right side.



# Flat Tournament Faceplate

Flip and trace for right side.  
Detail edge on next page.




# Flat Tournament Faceplate

Detail edges

Flip and trace for right edge

Top edge Left  
6mm

reverse 45 

Bottom edge Left  
6mm

reverse 45 



# Demonic Faceplate

Attach pattern here

45

optional slit.

45

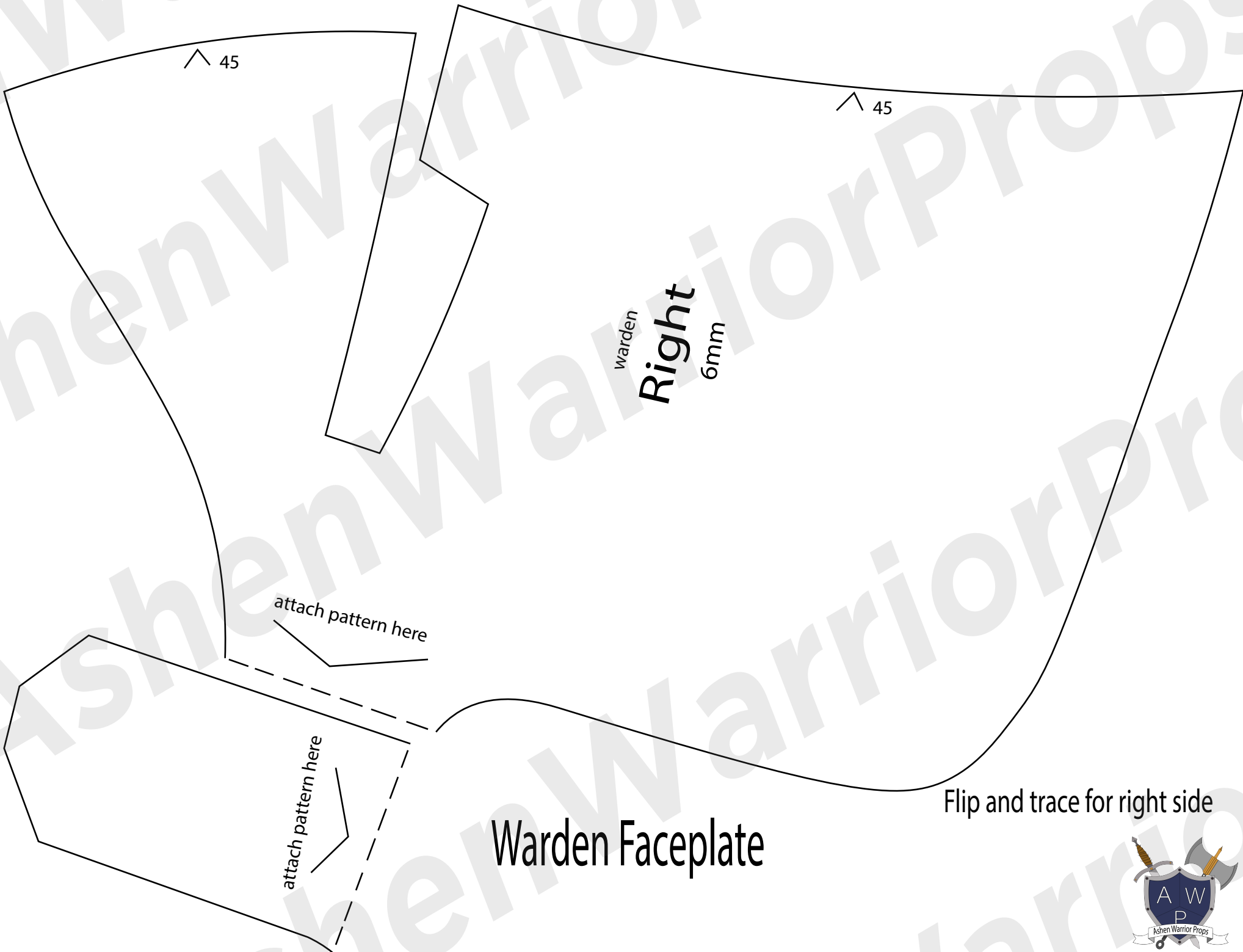
Demonic  
**Right**

6mm

Flip and trace for Left side.

Attach Pattern here.





45

45

warden

Right

6mm

attach pattern here

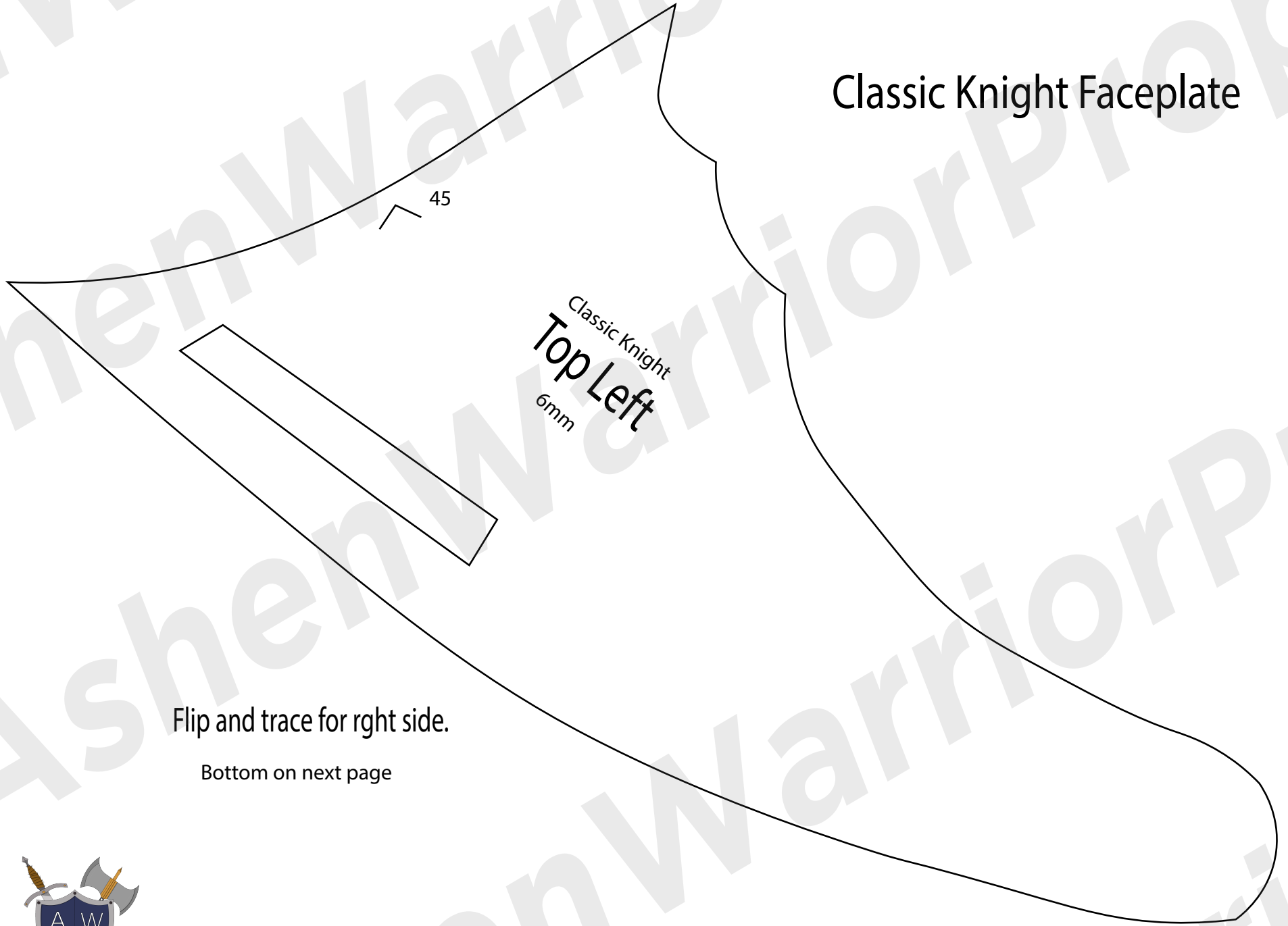
attach pattern here

Flip and trace for right side

Warden Faceplate



# Classic Knight Faceplate



45

Classic Knight  
Top Left  
6mm

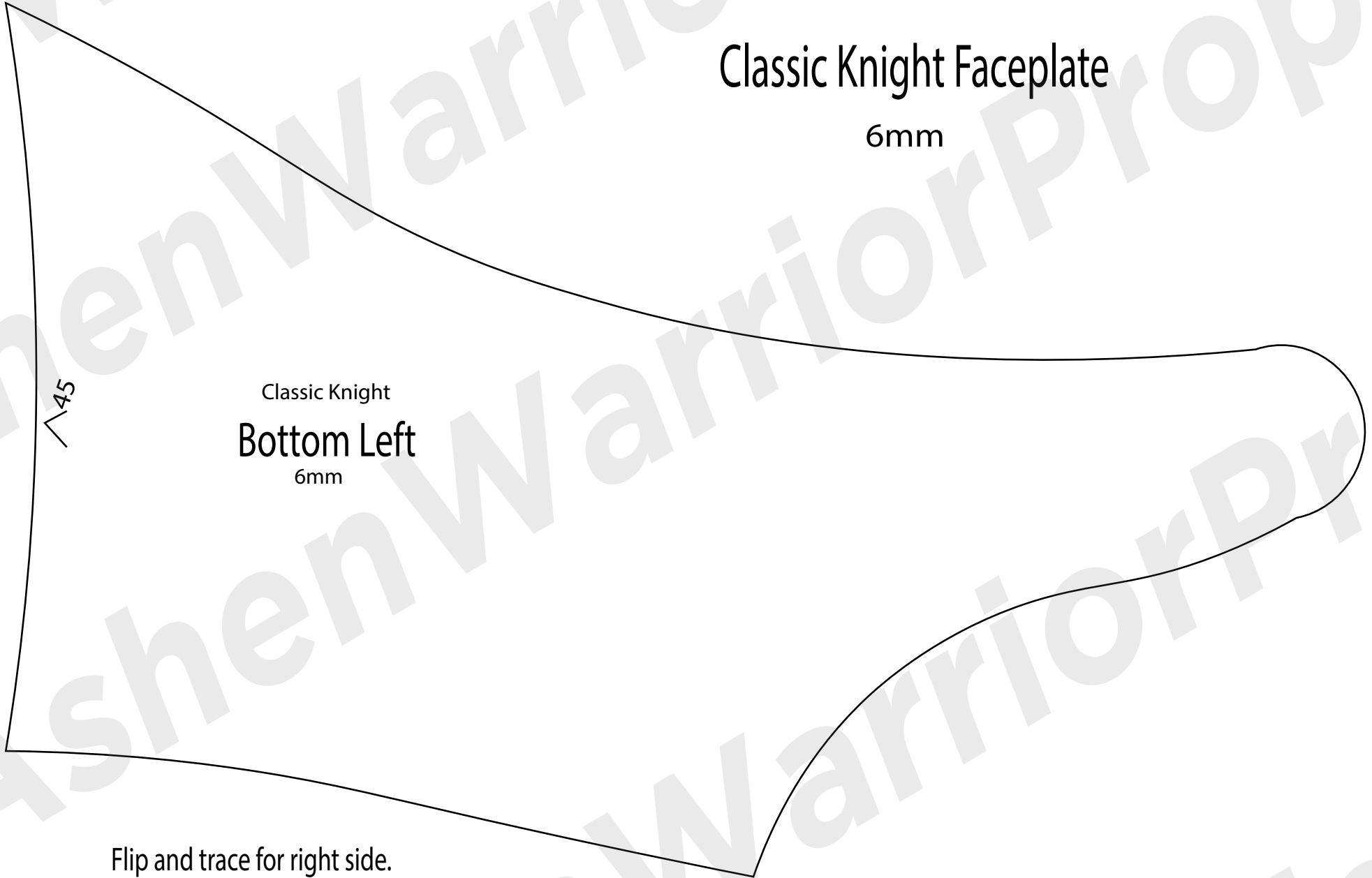
Flip and trace for right side.

Bottom on next page



# Classic Knight Faceplate

6mm



45

Classic Knight  
Bottom Left  
6mm

Flip and trace for right side.

